

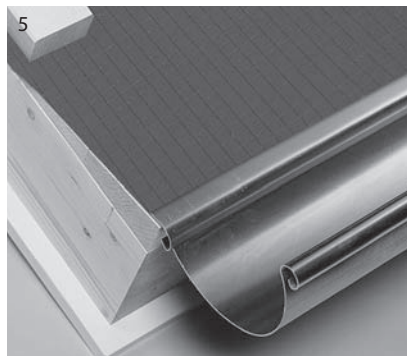
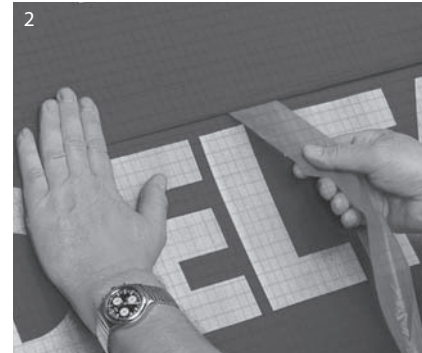
DELTA®-MAXX PLUS

Energy saver membrane

Conforms to the ZVDH product data sheet for soft sheathing, class UDG-A. Suitable for temporary roofing.

Installation instructions

- 1. Lay out DELTA®-MAXX PLUS energy saver membranes in parallel with the gutter, starting at the bottom.
- 2. Use staples or nails to fasten the sheets to the rafters. Remove backing strips, glue the sheets together, and secure with battens.
- 3. Wind-proof all joints by applying DELTA®-MULTI-BAND and/or DELTA®-THAN.
- 4. Keep openings for vent pipes small. Form a collar of DELTA®-MAXX PLUS energy saver membrane to seal the openings after installing the components. Use DELTA®-MULTI-BAND to seal any joints.
- 5. At the bottom, the self-adhesive edge of DELTA®-MAXX PLUS energy saver membrane should be in contact either with the fascia sheet or the area below the fascia board (not the gutter).



The product data sheet for soft sheathing (UDB) issued by the national association of roofers (ZVDH) expressly requires the installation of temporary roofing in attics converted for residential purposes and/or equipped with heat insulation, particularly where rehabilitation is involved.

To comply with the functional requirements of temporary roofing, all seams must be protected against water seepage and nail sealing tape applied under the counterbattens.

You will find detailed instructions for the installation of DELTA® soft sheathing and its application as temporary roofing at www.doerken.com in the form of pdf files.

■ Soft sheathing

■ For fully-insulated pitched roofs

■ Construction/rehabilitation